

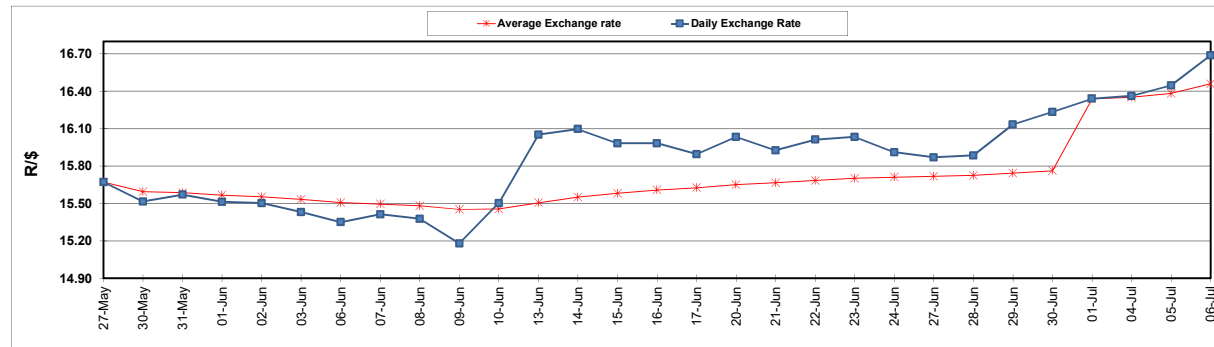
	PETROL 95 ULP	PETROL 93 ULP & LRP	DIESEL 0.05%	DIESEL 0.005%	ILL. PAR.
GAUTENG PUMP PRICE (SA c/l) AS FROM 06/07/2022	2,674.000	2,631.000	-	-	-
WHOLESALE PRICE (SA c/l) AS FROM 06/07/2022	-	-	2,540.440	2,552.840	1,986.288
SINGLE NATIONAL MAXIMUM RETAIL PRICE	-	-	-	-	2,623.000
BASIC FUEL PRICE - 06/07/2022 (SA c/l)	1,512.253	1,450.923	1,561.077	1,571.447	1,544.644
PRESS RELEASE CONTRIBUTION TO BFP 06/07/2022 - 06/07/2022 (SA c/l)	1,689.410	1,646.410	1,763.630	1,776.030	1,768.128
UNIT OVER/(UNDER) RECOVERY - 01/07/2022 (SA c/l)	177.157	195.487	202.553	204.583	223.484
AVERAGE BASIC FUEL PRICE 01/07/2022 - 06/07/2022	1,607.094	1,547.155	1,665.149	1,675.627	1,648.766
AVERAGE UNIT OVER/(UNDER) RECOVERY 01/07/2022 - 06/07/2022	(54.184)	(22.245)	(18.519)	(15.847)	(5.138)

ANALYSIS MOVEMENT OF AVERAGE OVER/(UNDER) RECOVERY

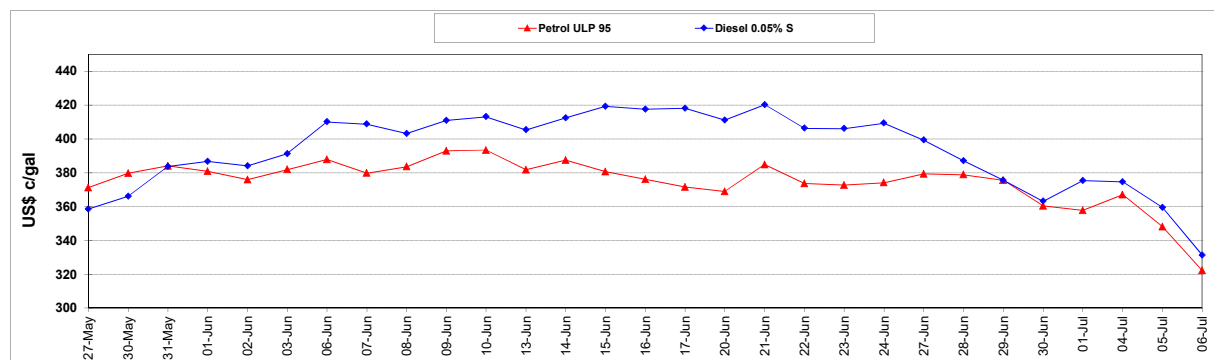
	PETROL 95	PETROL 93	DIESEL 0.05%	DIESEL 0.005%	ILL. PAR.
- MOVEMENT IN INTERNATIONAL PRODUCT PRICES	13.824	43.227	51.946	55.061	64.634
- MOVEMENT IN EXCHANGE RATE	(68.008)	(65.472)	(70.465)	(70.908)	(69.772)
AVERAGE UNIT OVER/(UNDER) RECOVERY 01/07/2022 - 06/07/2022	(54.184)	(22.245)	(18.519)	(15.847)	(5.138)

R/\$ EXCHANGE RATE - (R/\$16.6875 - 06/07/2022)

EXCHANGE RATE USED IN BASIC FUEL PRICE



INTERNATIONAL PRODUCT PRICES OF BASKET USED IN BASIC FUEL PRICE



BASIC FUEL PRICE IN SA CENTS PER LITRE

